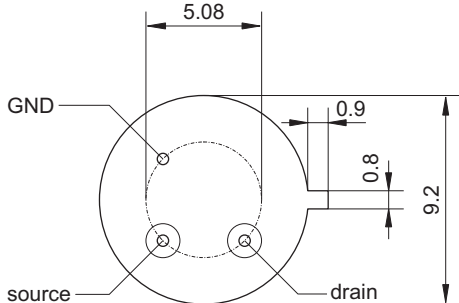
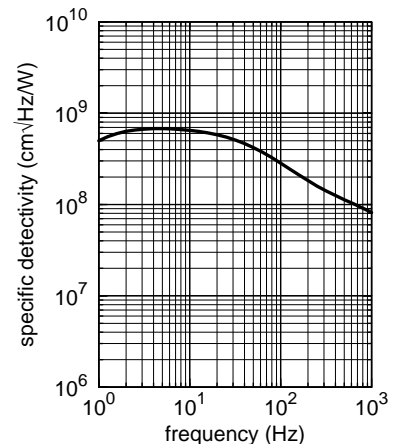
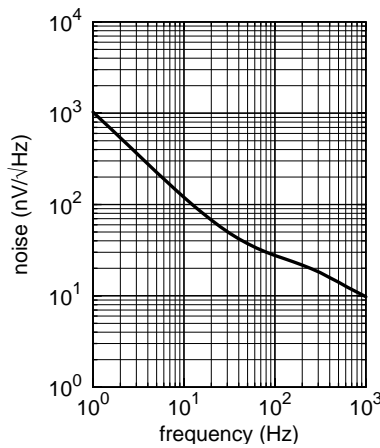
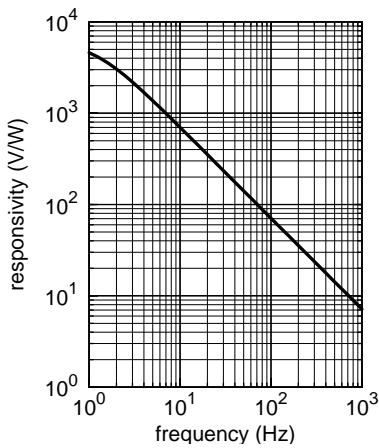
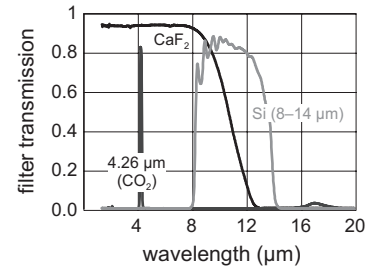
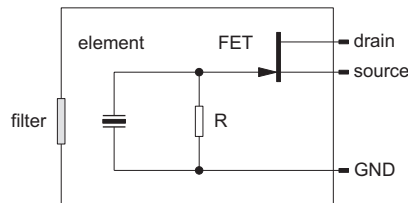
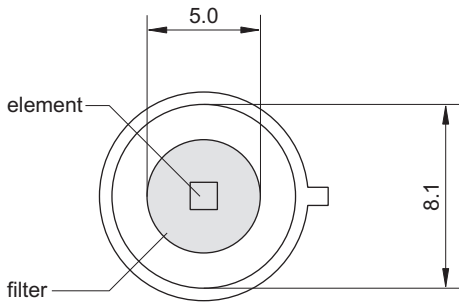
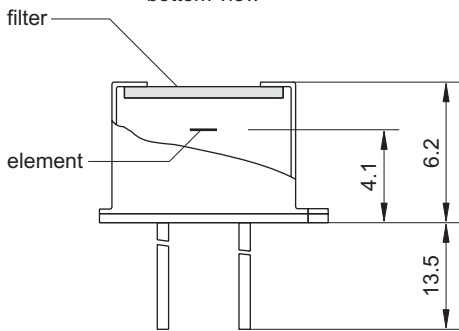


LTI Q1.2

Pyroelectric Single Element Detector for Measurement Applications



bottom view



element size 1.2 mm × 1.2 mm

aperture 5.0 mm

filter³ custom-designed

responsivity^{1,2} >700 V/W

noise¹ <120 nV/√Hz

specific detectivity^{1,2} >6.5 · 10⁸ cm √Hz / W

offset voltage 0.4 to 1.5 V

operating voltage 2 to 18 V

housing TO 39

operating temperature -20 to 70 °C

storage temperature -20 to 70 °C

1) frequency: 10 Hz, detector temperature: 25 °C

2) black body source temperature: 500 K, filter transmission: 100 %

3) other filters on request