

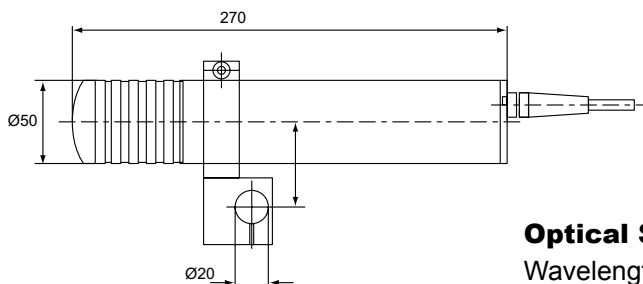


IDT5240 is an in-line laser with a strong protective cover, built with absolute precision and components of the highest quality to guarantee an extended working life and which is covered by a 30-month guarantee.

IDT5240 emits a fine, visible red line, from 3 (10 mW) to 12 metres (30 mW) in length, to be used for the accurate positioning of the material to be worked. Its internal power supply ensures protection against electrical surges. Further protection is given by the specially-designed external fuse (IP67). This state-of-the-art mechanical construction of the IDT5240 guarantees a perfect temperature stability, without the need for unnecessary cooling systems. The support can be attached to all standard fixtures with a diameter of 20, so as to simplify the positioning of the IDT5240 on all tools.

Mechanical Specifications

Dimension: Ø x l mm	50 x 250
Line length m	2 - 12
Environmental	IP 67
Operating temp. °C	-15 - +55
Storage temp. °C	-40 - +85
MTTF: h/25°C	> 30'000
Body:	Alu, red anodised



Optical Specifications

Wavelength: nm	635
Available Poweroutput: mW	10, 15, 20, 30
Beam Size at aperture: °/e2	120
Ray Stability mRad/°C	0,01

Electrical Specifications

Operating Voltage VAC	85-260
Operating current: I _{max}	90-110-130
Frequency: Hz	45 - 100
PSU	UL 94V-0
Safety	EN 55022, Class B, EN 55024


Options

Environmental	100% Waterproof
Holder for: Ø mm	22, 25

- 1 - 4 Meter Line length = 10mW
- 3 - 6 Meter Line length = 15mW
- 4 - 12 Meter Line length = 30mW

Code by order

- 5240/10 = 10mW
- 5240/15 = 15mW
- 5240/20 = 20mW
- 5240/30 = 30mW

 Swiss Made
Warranty 30 Months

For other Informations please contact: info@idtlaser.com